

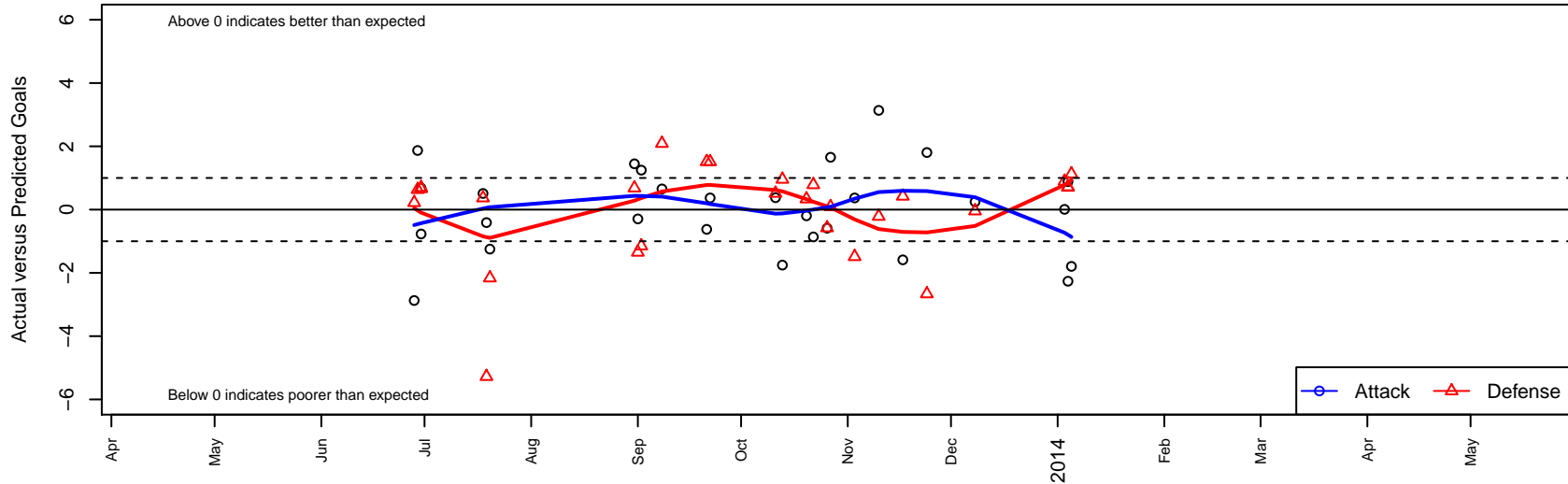
Kitsap Pumas 1 B97

Kitsap SC
 Bremerton, WA
 B97 total strength=1692
 attack=24.29 defense=19.92
 fall league = PSPL WSPL U16
 alt names used:
 Kitsap Pumas 1 B97
 Kitsap Pumas BU16 #1
 KITSAP PUMAS BU16 #1 (WA)
 Kitsap Pumas 1
 Kitsap Pumas Soccer Club BU16 – #1
 Kitsap Pumas A [B97]
 Kitsap Pumas B97 A
 Kitsap Pumas (WA)

Venues played:
 RVS Classic BU16
 NPL Championships U15
 Labor Day Cup B99–98 Academy
 PSPL WSPL U16
 PacNW Winter Classic Premier U16



Kitsap Pumas 1 B97
 Dots are actual minus expected GF (blue circles) and GA (red triangles).
 Blue line is smoothed change in attack strength. Red is smoothed change in defense strength.



	date	home		away		venue	pred.home	pred.away
21010	2014-01-05	WPFC White B97	0	Kitsap Pumas 1 B97	0	PacNW Winter Classic Premier U16	1.13	1.79
20953	2014-01-04	Kitsap Pumas 1 B97	3	WA Rush B97	0	PacNW Winter Classic Premier U16	2.12	0.71
20957	2014-01-04	Kitsap Pumas 1 B97	0	Blackhills FC Black B97	0	PacNW Winter Classic Premier U16	2.26	0.72
20864	2014-01-03	Crossfire Oregon Green II B97	0	Kitsap Pumas 1 B97	1	PacNW Winter Classic Premier U16	0.89	0.99
20700	2013-12-08	ISC Gunners A B97	1	Kitsap Pumas 1 B97	3	PSPL WSPL U16	0.96	2.75
19415	2013-11-24	Tynecastle FC B97	4	Kitsap Pumas 1 B97	4	PSPL WSPL U16	1.34	2.20
18902	2013-11-17	XiFA 2016 B97	1	Kitsap Pumas 1 B97	0	PSPL WSPL U16	1.42	1.59
18203	2013-11-10	Kitsap Pumas 1 B97	6	FC Edmonds Cobras B97	1	PSPL WSPL U16	2.86	0.79
17394	2013-11-03	Kitsap Pumas 1 B97	1	FC Spokane Black B97	3	PSPL WSPL U16	0.63	1.51
16365	2013-10-27	Emerald City FC Green B97	2	Kitsap Pumas 1 B97	3	PSPL WSPL U16	2.09	1.35
16125	2013-10-26	Kitsap Pumas 1 B97	1	XiFA 2016 B97	2	PSPL WSPL U16	1.59	1.42
15645	2013-10-22	FC Edmonds Cobras B97	0	Kitsap Pumas 1 B97	2	PSPL WSPL U16	0.79	2.86
15497	2013-10-20	Kitsap Pumas 1 B97	2	Tynecastle FC B97	1	PSPL WSPL U16	2.20	1.34
14581	2013-10-13	Kitsap Pumas 1 B97	1	ISC Gunners A B97	0	PSPL WSPL U16	2.75	0.96
13652	2013-10-11	Kitsap Pumas 1 B97	2	Washington East SC Seely B97	1	PSPL WSPL U16	1.62	1.51
11596	2013-09-22	FC Spokane Black B97	0	Kitsap Pumas 1 B97	1	PSPL WSPL U16	1.51	0.63
11250	2013-09-21	Washington East SC Seely B97	0	Kitsap Pumas 1 B97	1	PSPL WSPL U16	1.51	1.62
9637	2013-09-08	Kitsap Pumas 1 B97	2	Emerald City FC Green B97	0	PSPL WSPL U16	1.35	2.09
8789	2013-09-02	Kitsap Pumas 1 B97	2	Seattle United Copa B97	3	Labor Day Cup B99-98 Academy	0.75	1.85
8718	2013-09-01	Kitsap Pumas 1 B97	0	Sounders 1998B	3	Labor Day Cup B99-98 Academy	0.29	1.65
8595	2013-08-31	Portland Timbers 98-99 1998B	1	Kitsap Pumas 1 B97	2	Labor Day Cup B99-98 Academy	1.68	0.55
3976	2013-07-20	PAC San Jose Academy B97	5	Kitsap Pumas 1 B97	0	NPL Championships U15	2.84	1.25
3553	2013-07-19	Kitsap Pumas 1 B97	0	Chicago Magic PSG B97	14	NPL Championships U15	0.41	8.72
3363	2013-07-18	Albertson SC B97	4	Kitsap Pumas 1 B97	1	NPL Championships U15	4.37	0.49
2508	2013-06-30	Seattle United NE Blue B97	0	Kitsap Pumas 1 B97	1	RVS Classic BU16	0.66	1.77
2510	2013-06-30	Kitsap Pumas 1 B97	4	Crossfire Select Cline B97	0	RVS Classic BU16	3.32	0.69
2360	2013-06-29	MVP Rapids Navy B97	0	Kitsap Pumas 1 B97	6	RVS Classic BU16	0.63	4.13
2183	2013-06-28	Kitsap Pumas 1 B97	10	FC Edmonds Venom B97	0	RVS Classic BU16	12.87	0.22